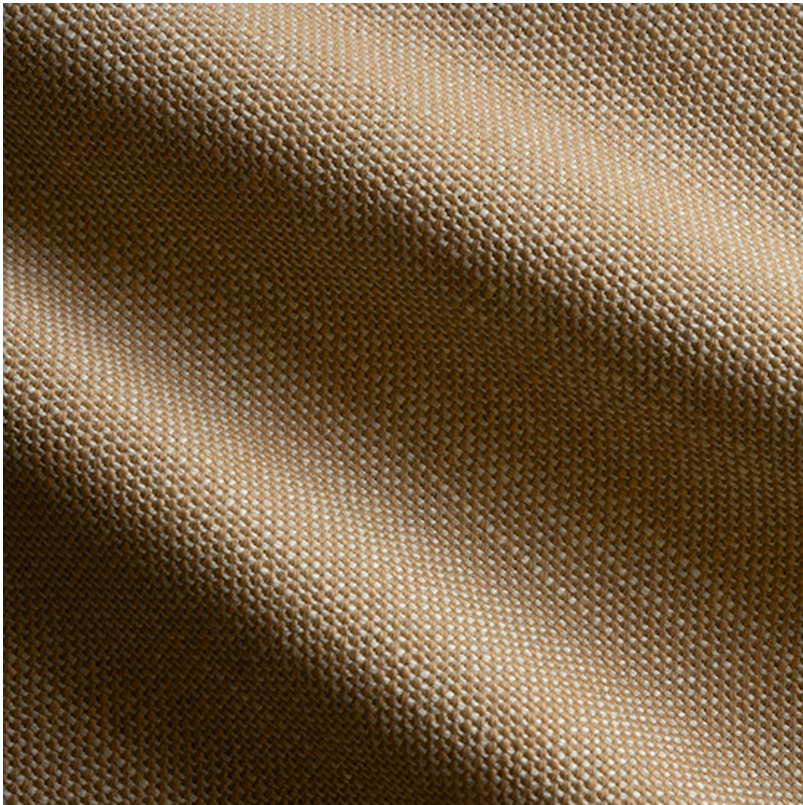


PERENNIALS



Camel Rough 'n Tumble

954-483

DETAILS & SPECS

Abrasion	50,000+ double rubs
Brush Pill	Class 4.5
UFAC/NFPA 260	PASS
Width	54 in (137 cm)
Weight	17.2 Oz/sq yd (584 gm/sq m)
Designer	Studio
Collection	2024 A Spring: Wabi-Sabi
Color Family	Beige/Tan
Color	Camel
Vertical Repeat	N/A
Horizontal Repeat	N/A

DESCRIPTION

A hardy linen-look quality with a soft brushed hand. Great for classic tailoring that needs a modern resistance to spills and chills.

All Perennials 100% solution-dyed acrylic fabrics are backed by an industry-leading no-fade guarantee valid for three years from the date of purchase (with the exceptions of prints, which hold a one-year warranty and Cabana™, which holds a five year warranty).

Perennials' technically superior fabrics are fade resistant, mildew- and mold-resistant, bleach cleanable and easily maintained. Be confident when you select fabrics identified by the Perennials Fiber Mark that you will receive a product that lives up to our name: enduring, constant and fun.