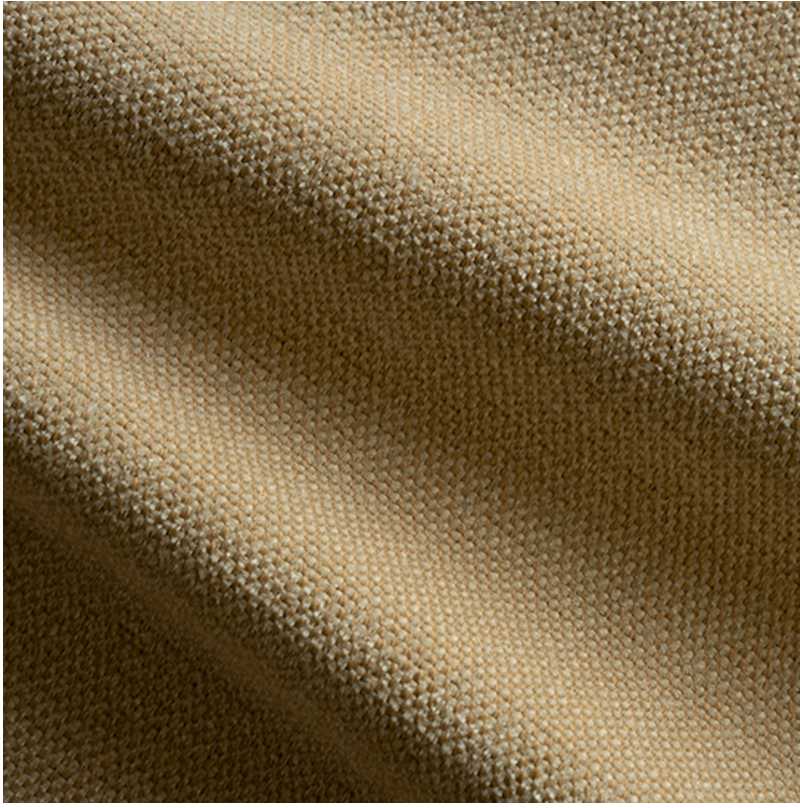


P E R E N N I A L S



Camel Rough 'n Rowdy

955-483

DETAILS & SPECS

| | |
|---------------|------------------------------|
| Abrasion | 25,000 Double Rubs |
| Brush Pill | Class 4 |
| UFAC/NFPA 260 | PASS |
| Width | 54 in (137 cm) |
| Weight | 13.12 Oz/sq yd (445 gm/sq m) |
| Designer | Studio |
| Collection | 2024 A Spring: Wabi-Sabi |
| Color Family | Beige/Tan |
| Color | Camel |
| Horizontal | N/A |
| Repeat | |

DESCRIPTION

A popular linen-look textured fabric.

All Perennials 100% solution-dyed acrylic fabrics are backed by an industry-leading no-fade guarantee valid for three years from the date of purchase (with the exceptions of prints, which hold a one-year warranty and Cabana™, which holds a five year warranty).

Perennials' technically superior fabrics are fade resistant, mildew- and mold-resistant, bleach cleanable and easily maintained. Be confident when you select fabrics identified by the Perennials Fiber Mark that you will receive a product that lives up to our name: enduring, constant and fun.